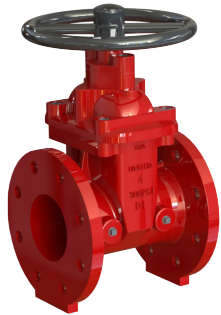


LINECARD



Gate Valves

Model 2010 2"-48" AWWA C-515, Rated 250-300psi, D.I., Stainless Shaft, Resilient Seated, EPDM Encapsulated Disc, Fusion Bonded Epoxy Coated Body, FL x FL, MJ x MJ, MJ x FL, Threaded.

Model 2030 for AWWA C-515 OS&Y Gate Valves UL/FM Rated 300psi.



Fireflo Fire Hydrants

Models F-06, AWWA C-502 Dry Barrel, Bury Depths 3'-9', F-08 AWWA C-503 Wet Barrel, Ductile Iron Construction, available with or without monitor flanges and storz nozzles.



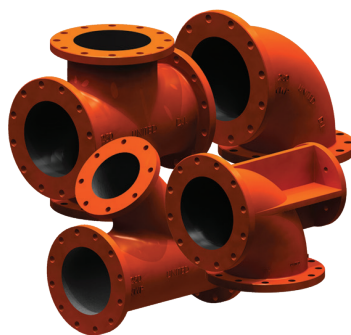
Check Valves

Model 7700/7700 LW, 9600, 8700 AWWA C-508, 2"-24", Rated 200 psi, Fusion Bonded Epoxy Coated, Buna/EPDM Elastomers, Stainless Steel Hardware, Available: Plain, Lever & Weight, Lever Weight & Spring, Swing Flex Check, and Fire Protection valves rated at 300 psi.



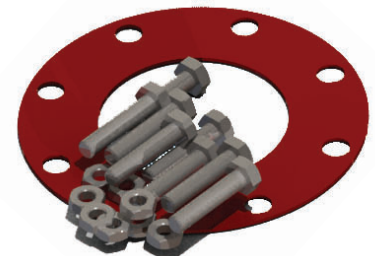
Butterfly Valves

Model 3900 AWWA C-504 4"-24", Rated 250 psi, Class 250B, Manual IP68 Gear Operator suitable for underground burial, 2" square op nut or hand wheel. Fusion Bonded Epoxy Coated, 316SS disc edge, ISO 5211 Mounting Plate. FL X FL, MJ X MJ. Industrial Model 3420-L-2 Full lug style butterfly valves available from stock.



Flange Fittings

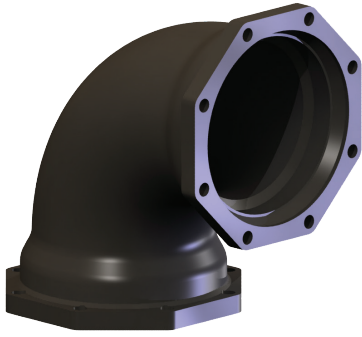
AWWA C110, 3"-48" Ductile Iron Grade 65-45-12 ASTM 536, Flanges faced and drilled in accordance with ANSI B16.1/Class 125. Interior Cement Lining and Bituminous Coating in Accordance with AWWA C104/ANSI A21.4. Optional Coatings available.



Flange Fitting Accessories

For Class 125/150 & 250/300 Flanges, including full face and ring type red rubber gaskets, non-asbestos gaskets and Seal-Tite gaskets with zinc, 304SS & 316SS and Galvanized Bolts and Nuts.

LINECARD



Mechanical Joint Fittings

AWWA C-153 Compact Body, 3"-48", Ductile Iron Grade 65-45-12, Rated 350 psi, Cement Lining: Interior to AWWA C104 (ANSI A21.4) with bituminous seal coat (NSF61). Optional coatings available.



Mechanical Joint Accessories

Including T-Bolts (Kor-10 or Kor-10 BLU) and Nuts, Gaskets (standard, transition, and SDR35) in SBR and Glands. Nitrile & Viton available upon request.



Flanges

Threaded Flanges, Flange Converters, Flange Fillers, Compact Flange Reducers, and REDI-FLANGE adapters.



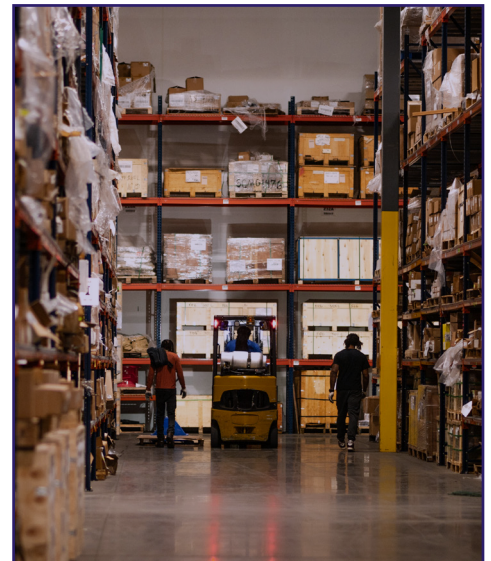
Grooved Flange Adapter

High strength ductile iron, ASTM A536, Grade 65-45-12. Drilled in accordance with ANSI B16.1 Class 125. Conforms to AWWA C606 Standard. Flexible joint. Fusion bonded epoxy coated. Working pressure: 300psi.



Unifit Wide Range Couplings/Adapters

Ductile iron construction, EPDM Gaskets, high strength zinc coated steel nuts, bolts, and washers. Fusion bonded epoxy coated, SS Bolt Kit optional, 250 psi.



Questions?
Email us today!
sales@pupco.com