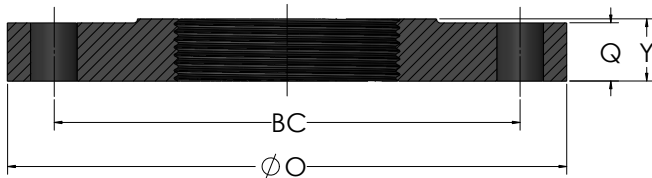


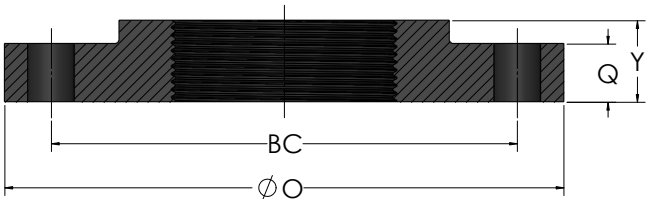
CAST IRON COMPANION FLANGES

For Use on Steel Pipes

Standard Companion Flange



Reducing Companion Flange



DESCRIPTION

- Material: Cast Iron – ASTM A126 Class B
- Flange Drilling to ANSI B16.1 Class 125
- Flange Threads to ANSI B1.20.1
- Coating:
 - Black Enamel (standard)
 - Red Primed
 - Epoxy Coated
 - Hot-Dipped Galvanized

Standard Companion Flange (Cast Iron 306)

NOMINAL SIZE	PART NUMBER	BC	O	Q	Y	BOLT HOLES		WEIGHT (LBS)
						COUNT	SIZE	
1"	306-100-0425	3.12	4 ³ / ₄	7 ¹ / ₁₆	1 ¹ / ₁₆	4	0.62	1.75
1 ¹ / ₄ "	306-125-0463	3.50	4 ⁵ / ₈	1 ¹ / ₂	1 ³ / ₁₆	4	0.62	2.00
1 ¹ / ₂ "	306-150-0500	3.88	5	9 ¹ / ₁₆	7 ⁷ / ₈	4	0.62	2.25
2"	306-200-0600	4.75	6	5 ⁵ / ₈	1	4	0.75	4.00
2 ¹ / ₂ "	306-250-0700	5.50	7	1 ¹ / ₁₆	1 ¹ / ₈	4	0.75	6.00
3"	306-300-0750	6.00	7 ¹ / ₂	3 ³ / ₄	1 ³ / ₁₆	4	0.75	7.63
3 ¹ / ₂ "	306-350-0850	7.00	8 ¹ / ₂	1 ³ / ₁₆	1 ¹ / ₄	8	0.75	9.50
4"	306-400-0900	7.50	9	1 ⁵ / ₁₆	1 ⁵ / ₁₆	8	0.75	11.75
5"	306-500-1000	8.50	10	1 ⁵ / ₁₆	1 ⁷ / ₁₆	8	0.88	14.00
6"	306-600-1100	9.50	11	1	1 ¹ / ₁₆	8	0.88	16.50
8"	306-800-1350	11.75	13 ¹ / ₂	1 ¹ / ₈	1 ³ / ₄	8	0.88	26.00
10"	306-1000-1600	14.25	16	1 ³ / ₁₆	1 ¹⁵ / ₁₆	12	1.00	38.00
12"	306-1200-1900	17.00	19	1 ¹ / ₄	2 ³ / ₁₆	12	1.00	51.00

CAST IRON COMPANION FLANGES | For Use on Steel Pipes

Reducing Companion Flange (Cast Iron 316)										
NOMINAL SIZE		PART NUMBER	THREAD SIZE	BC	O	Q	Y	BOLT HOLES		WEIGHT (LBS)
PIPE x O.D.	FLG x PIPE							COUNT	SIZE	
1 x 5	1½ x 1	316-100-0500	1	3.88	5	9/16	11/16	4	0.62	2.75
1¼ x 5	1½ x 1¼	316-125-0500	1¼	3.88	5	9/16	13/16	4	0.62	2.50
1 x 6	2 x 1	316-100-0600	1	4.75	6	5/8	11/16	4	0.75	5.00
1¼ x 6	2 x 1¼	316-125-0600	1¼	4.75	6	5/8	13/16	4	0.75	4.75
1½ x 6	2 x 1½	316-150-0600	1½	4.75	6	5/8	7/8	4	0.75	4.50
1½ x 7	2½ x 1½	316-150-0700	1½	5.50	7	11/16	7/8	4	0.75	7.00
2 x 7	2½ x 2	316-200-0700	2	5.50	7	11/16	1	4	0.75	6.75
1 x 7½	3 x 1	316-100-0750	1	6.00	7½	¾	13/16	4	0.75	9.00
1½ x 7½	3 x 1½	316-150-0750	1½	6.00	7½	¾	7/8	4	0.75	8.75
2 x 7½	3 x 2	316-200-0750	2	6.00	7½	¾	1	4	0.75	8.50
2½ x 7½	3 x 2½	316-250-0750	2½	6.00	7½	¾	1½	4	0.75	8.00
1½ x 9	4 x 1½	316-150-0900	1½	7.50	9	15/16	1	8	0.75	14.75
2 x 9	4 x 2	316-200-0900	2	7.50	9	15/16	1	8	0.75	14.00
2½ x 9	4 x 2½	316-250-0900	2½	7.50	9	15/16	1½	8	0.75	13.50
3 x 9	4 x 3	316-300-0900	3	7.50	9	15/16	1¾	8	0.75	12.75
2 x 10	5 x 2	316-200-1000	2	8.50	10	15/16	1	8	0.88	18.00
3 x 10	5 x 3	316-300-1000	3	8.50	10	15/16	1¾	8	0.88	17.00
4 x 10	5 x 4	316-400-1000	4	8.50	10	15/16	15/16	8	0.88	16.00
1½ x 11	6 x 1½	316-150-1100	1½	9.50	11	1	1½	8	0.88	27.00
2 x 11	6 x 2	316-200-1100	2	9.50	11	1	1½	8	0.88	26.00
2½ x 11	6 x 2½	316-250-1100	2½	9.50	11	1	1¾	8	0.88	25.00
3 x 11	6 x 3	316-300-1100	3	9.50	11	1	1¾	8	0.88	23.00
4 x 11	6 x 4	316-400-1100	4	9.50	11	1	15/16	8	0.88	21.00
5 x 11	6 x 5	316-500-1100	5	9.50	11	1	17/16	8	0.88	19.00
2 x 13½	8 x 2	316-200-1350	2	11.75	13½	1½	13/16	8	0.88	40.00
3 x 13½	8 x 3	316-300-1350	3	11.75	13½	1½	13/16	8	0.88	40.00
4 x 13½	8 x 4	316-400-1350	4	11.75	13½	1½	15/16	8	0.88	37.00
5 x 13½	8 x 5	316-500-1350	5	11.75	13½	1½	17/16	8	0.88	34.00
6 x 13½	8 x 6	316-600-1350	6	11.75	13½	1½	19/16	8	0.88	31.00

CAST IRON COMPANION FLANGES | For Use on Steel Pipes

Reducing Companion Flange (Cast Iron 316)

NOMINAL SIZE		PART NUMBER	THREAD SIZE	BC	O	Q	Y	BOLT HOLES		WEIGHT (LBS)
PIPE x O.D.	FLG x PIPE							COUNT	SIZE	
2 x 16	10 x 2	316-200-1600	2	14.25	16	1 ³ / ₁₆	1 ¹⁵ / ₁₆	12	1.00	61.00
4 x 16	10 x 4	316-400-1600	4	14.25	16	1 ³ / ₁₆	1 ¹⁵ / ₁₆	12	1.00	57.00
6 x 16	10 x 6	316-600-1600	6	14.25	16	1 ³ / ₁₆	1 ¹⁵ / ₁₆	12	1.00	53.00
8 x 16	10 x 8	316-800-1600	8	14.25	16	1 ³ / ₁₆	1 ¹⁵ / ₁₆	12	1.00	50.00
2 x 19	12 x 2	316-200-1900	2	17.00	19	1 ¹ / ₄	2 ³ / ₁₆	12	1.00	84.00
4 x 19	12 x 4	316-400-1900	4	17.00	19	1 ¹ / ₄	2 ³ / ₁₆	12	1.00	86.00
6 x 19	12 x 6	316-600-1900	6	17.00	19	1 ¹ / ₄	2 ³ / ₁₆	12	1.00	88.00
8 x 19	12 x 8	316-800-1900	8	17.00	19	1 ¹ / ₄	2 ³ / ₁₆	12	1.00	81.00
10 x 19	12 x 10	316-1000-1900	10	17.00	19	1 ¹ / ₄	2 ³ / ₁₆	12	1.00	72.00